

# MICROSS



**Making the bone harvesting  
a handy procedure**

Micross: a minimally invasive disposable device indicated for cortical bone harvesting. The excellent cutting performance, due to its outstanding micro-blade, allows for an easy collection of autologous bone, even in narrow and hard-to-reach areas.

This harvesting technique warrants the best preservation of cell vitality of the cortical tissue, a fundamental characteristic for the best graft integration.

**The only instrument for  
the Tunnel harvesting  
technique**

Micross is the only bone harvesting device specifically studied for tunnel surgical techniques that minimise post-operation discomfort. The external diameter of the cannula is 5mm and due to its particular shape the instrument can be inserted in tissue tunnels in the intraoral area as the external oblique line, the cortical palatine and the zygomatic process.



Sterile single pack:  
Product Code: MET-4049

# Geistlich Select

MADE IN ITALY



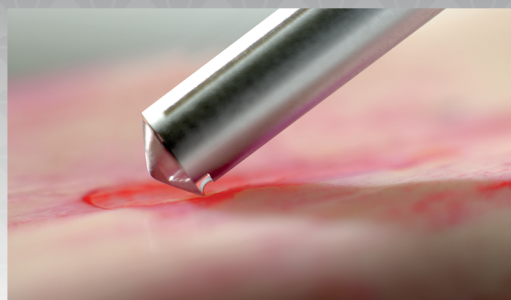


# MICROSS



By using Micross the bone tissue is directly collected in the chamber inside the cannula and it gets an excellent biological plasticity, because of the presence of coagulated blood.

The volumising effect, due to the curly morphology of the collection reduces the quantity of bone needed to fill the defect and as a consequence it minimises invasiveness for the patient.



Chamber capacity 0.25 cc



## Advantages of the disposable semicircular blade

- Maximum cutting efficiency
- Collects cortical bone shavings of appropriate size and thickness for the graft integration
- Excellent control during the harvesting procedure
- Effective on any bone surface (plane, concave, convex)
- No contamination due to the wear of the device



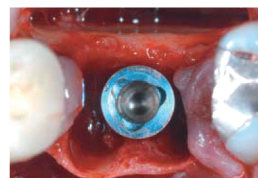
### Periodontal defect



### Peri-implant defect



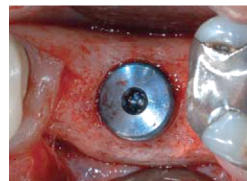
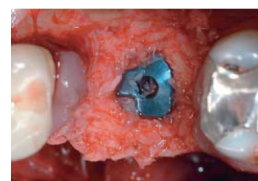
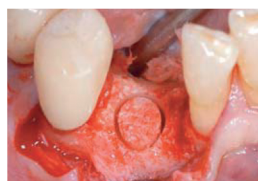
### Post-extraction defect



## The only instrument for the Tunnel harvesting technique



Clinical cases courtesy of Dr. F. D'Avenia (Italy)



BONE AUGMENTATION TREATMENT/OPERATION	RECIPIENT SITE FEATURES	BONE GRAFT VOLUME
Post-extraction alveolar defect	Self-containing intra-bony defect or four-walls defect of premolar root volume.	0,25-0,3 cc.
Peri-implant dehiscence, single implant	Healthy mesial and distal adjacent teeth. Maximum implant surface exposition: 5 threads and 1/3 of the dental implant diameter	0,4 cc.
Peri-implant dehiscence, 2 adjacent implants	Healthy mesial and distal adjacent teeth. Maximum implant surface exposition: 5 threads and 1/3 of the dental implant diameter	0,7-0,8 cc.

**Product Code: MET-4049 MICROSS** 1 Pc. Micross is a throwaway device, in a sterile single pack. Sterility is guaranteed for 3 years if the package is undamaged.

Distributed by

**Geistlich**  
Biomaterials

Australia +61 (1) 800 776 326  
www.geistlich.com.au  
New Zealand +64 - (0) - 800 500 043  
www.geistlich.co.nz